

Congregation Beth Shalom Bulletin

*The Monthly Newsletter
of
Naperville's Congregation Beth Shalom
An Independent Jewish Congregation*

From the Desk of the Rabbi

By Rabbi Marc Rudolph

*The soul is no traveler, the wise man stays
at home.*

--Ralph Waldo Emerson

One of the unique features, I discovered recently, upon moving to this community is the unusually close relationship that has been forged between Chicago's Jewish United Fund/Jewish Federation and the rabbinic community of Chicagoland. According to their website (www.juf.org), "The Jewish United Fund/Jewish Federation of Metropolitan Chicago is the largest not-for-profit social welfare institution in Illinois and the central address of Chicago's Jewish community. JUF provides critical resources that bring food, refuge, health care, education and emergency assistance to 300,000 Chicagoans of all faiths and two million Jews around the world." For the past seven years, JUF has organized an annual mission for rabbis in the Chicago area to Europe and Israel. This year, I will be joining that mission, which will take us to Prague for three days and Israel for six in mid-February. Thirty three rabbis from the greater Chicago area will be going on this trip.

We prepare for this mission with three study sessions on the history of the Prague Jewish community. Leading these sessions is Judaic scholar Rabbi Yechiel Poupko of JUF. www.npr.org/templates/story/story.php?storyId=89938078 (A Friendship Tested by Faith). The mission will also take us to Terezin, the Nazi concentration

camp that was a "show camp" where the Nazis demonstrated to the world their "humane" treatment of the Jewish inmates there. In fact, of the 15,000 children who were taken to Terezin, only

(From the Desk of the Rabbi continued on page 6)



The Jewish Quarter in Prague, known as Josefov, is located between the [Old Town Square](#) and the Vltava River. Its torrid history dates back to the 13th century, when the Jewish community in Prague was ordered to vacate their disparate homes and settle in one area.

January 2009

Candle Lighting Times



January 2nd	4:13pm
January 9th	4:20pm
January 16th	4:28pm
January 23rd	4:36pm
January 30th	4:45pm



CONGREGATION BETH SHALOM BULLETIN



THE MONTHLY NEWSLETTER OF CONGREGATION BETH SHALOM

772 West 5th Ave. ~ Naperville, Illinois 60563-2641

Phone: 630-961-1818 ~ Fax: 630-961-2094

E-mail: office772@napershalom.org ~ Homepage: www.napershalom.org

Congregation Beth Shalom Posting Board: <http://groups.yahoo.com/group/napershalom/>



Congregation Beth Shalom Staff

Rabbi: Marc Rudolph
rabbirudolph@napershalom.org

Cantor: Hasha Musha Perman
hashamusha@gmail.com

Early Learning Director: Robin Frisch
rfrisch@napershalom.org

Education Director: Barbara Bernstein
morah2345@comcast.net

Board Of Directors 2008-2009

President	Mark Greenberg	630-579-8157	cbsnaper.president@gmail.com
VP Administration	Adam Cohen	630-961-4965	acohen@anl.gov
VP Education	Michael Mayer	630-369-4049	mmayer@callone.com
VP Finance & Development	Bob Fisher	630-369-6680	Bob1Fisher@aol.com
VP Finance & Development	Liz Levitt	630-357-3166	liz_levitt@wowway.com
VP Member Services	Brad Kolar	630-983-9409	bkolar@sbcglobal.net
VP Membership Team	Greg Shugar Gina Shugar	630-778-1971	greg@thetiebar.com gina.shugar@yahoo.com
VP Religious Practice	Joshua Weikersheimer	630-969-4148	safdie@ameritech.net
Secretary	Stephan Chriqui	630-848-0800	schriqui@att.net
Treasurer	Betsy Wunder	630-420-8675	Betsyawunder@aol.com
Director at Large	Gene Parker	630-357-5047	eparkint@sbcglobal.net
Director at Large	Neil Samuels	630-420-6206	neil@profoundconversations.com
Past President	Vicki Robinson	630-961-9167	CBSVicki@aol.com

Oneg Shabbat

Adam Cohen	630-961-4965	acohen@anl.gov
------------	--------------	--

Newsletter Co-Editors

Erica and Jim Roberts	630-260-0240	cbsshalomnewsletter@yahoo.com
-----------------------	--------------	--

Chesed Committee Co-Chairs

Bob Fisher	630-369-6680	bob1fisher@aol.com
Carole Kerr	630-355-1115	kerr_c@sbcglobal.net

Cultural Arts

Linda Gaines, Chair	lgaines@anl.gov
Harold Winston	hjwinston@aol.com
Joanne Sapadin	jsapadin@sbcglobal.net
Jeff Shapiro	shapiroj881@comcast.net
Hilary Deceint	hilarydecent@yahoo.co.uk
Eileen Landau	LAND1942@aol.com
Lisa Ohlhausen	lohlhausen@yahoo.com
Jim Roberts	jjfr857@sbcglobal.net
Brian Toby	
Gail Sonkin	gail.sonkin@gmail.com
Emily Levin	

Religious School Board Of Directors 2008-2009

Michael Mayer, chair	630-369-4049	mmayer@callone.com
Liz Branshaw	630-262-1332	liznphil@hotmail.com
Lisa Ohlhausen	630-416-0435	lohlhausen@yahoo.com
Renee Major	630-357-8936	ntoto2@wowway.com
Tony Paren	630-355-8352	bullsfan@wowway.com
Robin Rubin	630-922-8487	robinkellyrubin@yahoo.com
Diane Toby	630-637-6442	dtoby@comcast.net

Library Committee 2008-2009

Gerry Mendelssohn, LTA	630-416-2195	Curleybook@aol.com
Carol Medor	630-983-6353	crmedor@aol.com
Kara Novins	630-961-5098	kbn@wowway.com
Sharon Glass	630-946-6441	shronava@aol.com
Michael Mayer	630-369-4049	mmayer@callone.com
Sara Scheiner	630-717-9811	sara.schein@aol.com
Lauren Jackson	630-527-9778	jackson@fda.hhs.gov

Early Learning Center Committee

Jackie Kagan, Chair	630-718-0165	jkagan2003@yahoo.com
Wendy Adler	630-236-5767	jne1107@aol.com
Lauri Covas	630-718-0780	lauri930@yahoo.com
Kim Sharon	630-416-0556	ksharon@magellanddevelopment.com
Yanina Rabinovitch	630-585-6730	yabinovitch@sbcglobal.net

CALLING ALL TORAH CHANTERS!

"The Bible should be read in public, and made understood to its hearers in musical and sweet tones---and those who read the Torah without tune, show disregard for it, and its vital values and laws."

--The Talmud, 1st Century C.E.

Calling all post-Bar or Bat Mitzvah Teens who would like to inspire the younger Bnai Mitzvah students and keep their Torah Trope skills sharp!

Calling all Adults who once chanted Torah and have run out of "lein" excuses!

Did you know that we chant Torah at every Shabbat morning service? The Torah was meant to be sung, and we sing it! Join our growing "Legion of Leiners." We will help you brush up your skills, give you plenty of time to prepare, and provide you with a portion to learn and chant that is manageable for you.

Remember: You don't have to be a Maven to do a Mitzvah!

Your honor awaits!

Contact Bernie Newman

at

(630) 357-4544

Or

banewman22@aol.com

Deliver a D'var Torah at Services:

Would you like to deliver a d'var Torah at a Friday night or Saturday morning service? Rabbi Rudolph would be glad to assist you with ideas and guidance. Contact the Rabbi for a date. We would love to hear from you.

World Peace Day Interfaith Prayer Service January 1, 2009

Members of Congregation Beth Shalom are invited to an interfaith prayer service to celebrate World Peace Day in Naperville on Thursday, January 1, at 2:00 pm at the First Congregational Church at 25 East Benton Street in downtown Naperville.

The theme of the observance is "Working Together: Hope for a Peace-filled Future." Members of many different faith traditions will share prayers and readings appropriate to this theme, including our own Yonah Klem. And Bernie Newman will deliver the main address.

IN OUR FAMILY

Member Family Announcements

Condolences

Condolences to Cheryl Cash and her family on the death of her father, Stewart Koppel, on Monday morning, December 8th.

Congratulations

Congratulations to Doug and Celia Marlowe on the birth of their first grandchild Samuel Joseph Westermann. The proud parents, Allison and David are doing well. Samuel was born September 9th, 2008.

By-Laws Committee Update

The committee has completed the process of examining all of the feedback from members gathered in meetings, via email or personal conversations. A draft has been completed and has been forwarded to the Board of Directors for their review and vote to send the document on to the membership.

It is expected that a notice of a general meeting, called for the specific purpose of -approving the rewrite of the by-laws, will be mailed in December for a January membership meeting. Please watch your mail for the notice.

The Cantor's BAT MITZVAH CONCERT

***13 Years of Service to CBS
(with guest artists)***

Saturday, January 31, 2009 at 8:00 pm

***Chocolate Reception to Follow!
At Congregation Beth Shalom***

Community Worship Calendar

December 2008 - January 2009 Kislev - Tevet 5769

Friday, January 2, 2009

(Candle Lighting 4:11 pm)

6:30pm Family Service
8:00pm Kabbalat Shabbat

Saturday January 3

9:00am Torah study
10:00am Shabbat Shakharit

Friday, January 9

(Candle Lighting 4:18 pm)

8:00pm Kabbalat Shabbat
Birthday and anniversary blessings

Saturday January 10

9:00am Torah study
10:00am Shabbat Shakharit
Sixth Grade Chants Torah

Friday January 16, 2009

(Candle Lighting 4:26 pm)

8:00pm Kabbalat Shabbat

Saturday January 17

9:00am Torah study
9:30am Kibbutz Katan Tot Shabbat
10:00am Shabbat Shakharit

Bar Mitzvah of David Kraemer

Friday, January 23

(Candle Lighting 4:35 pm)

7:15pm Meditation
8:00pm Kabbalat Shabbat

Saturday January 24

9:00am Torah study
10:00am Shabbat Shakharit
10:30am Junior Congregation

Friday, January 30

(Candle Lighting 4:44 pm)

8:00pm Kabbalat Shabbat

Saturday January 31

9:00am Torah study
10:00am Shabbat Shakharit

Friday, February 6, 2009

(Candle Lighting 4:53 p.m.)

6:30 p.m. Young Family Service
8:00 p.m. Kabbalat Shabbat

Saturday February 7

9:00 a.m. Torah study
10:00 a.m. Shabbat Shakharit

Bar Mitzvah of Keith Larson

10:30 a.m. Junior Congregation

Friday, February 13

(Candle Lighting 5:02 p.m.)

6:15 p.m. Tu B'Shvat Shabbat Dinner
8:00 p.m. Kabbalat Shabbat

Birthday and anniversary blessings

Saturday February 14

9:00 a.m. Torah study
10:00 a.m. Shabbat Shakharit

B'not Mitzvot of Lauren and Brittany Karlin

Friday February 20, 2009

(Candle Lighting 5:10 p.m.)

7:30 p.m. Friday Night Live/Synaplex
8:00 p.m. Traditional service

Saturday February 21

9:00 a.m. Torah study
9:30 a.m. Kibbutz Katan Tot Shabbat
10:00 a.m. Shabbat Shakharit
10:30 a.m. Junior Congregation

Friday, February 27

(Candle Lighting 5:19 p.m.)

7:15 p.m. Meditation
8:00 p.m. Kabbalat Shabbat

Saturday February 28

9:00 a.m. Torah study
10:00 a.m. Shabbat Shakharit
Bat Mitzvah of Rachel Adam
8:00 p.m. PURIM SHPIEL

Seniors' Group Meeting

Wednesday, January 14th, 1:00pm
At the Synagogue

For more information please call:

<i>Florence Baer</i>	<i>630-462-3651</i>
----------------------	---------------------

<i>Rhoda Pons</i>	<i>630-585-7403</i>
-------------------	---------------------

Good Company

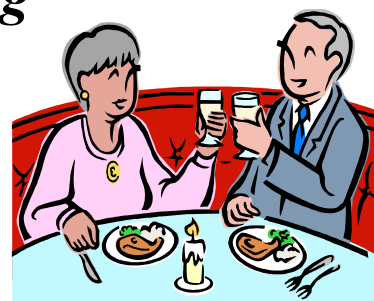
Something New

Everyone's Welcome!

Friendship

Great Times

Conversation



Religious School News

From Barbara Bernstein

I hope everyone enjoyed their winter break. Our first day back at school is Tuesday, January 6. We have a lot of activities for the second half of the school year. Since the snow has begun in earnest, I'd like to re-view our school closing procedure with you again. If we are going to cancel school, we will make every effort to call you. We also post our closing on www.emergencyclosings.com. You can sign up to receive an email notification on the website. This web posting will also send our school closing to WGN radio 720 AM, WBBM radio 780 AM, CBS Ch. 2, NBC Ch. 5, ABC Ch. 7, WGN Ch. 9, FOX 32 and CLTV cable.

Our theme for the month of January (Tevet) is *shmirat ha'guf*, taking care of your body. Since we are all made in the image of the Almighty, our bodies should be treated with care and respect. How are some of the ways we can do this? Our *tzedakah* of the month is any food that can warm someone's body on a cold, winter night such as soups, casserole fixings, warm desserts, etc. See how creative you can be! All foods will be donated to Loaves and Fishes. In these uncertain times, the food pantries are in greater need of food for more people. Please be as generous as you can.

Our Israeli Day was a smash! The energy in the classrooms as each grade prepared their exhibits was amazing. This couldn't have happened without the help of many people. Our teachers deserve a huge round of applause for throwing themselves wholeheartedly into creating the projects and for their help during Israeli Day. Thanks to the original Israeli Day committee: Fran Kraemer, Zena Goldenberg, Diane Toby, Joanne Spitz and Ileana Haskell. It was their vision that spurred everyone else on. Thanks to Fran, Michael, David, Sarah and Rachel Kraemer, Natalie and John Young, Lynn and Becky Lawrence, Diane and Brian Toby and Renee, Becca and Adam Major for doing such an awesome job decorating the social hall and sanctuary. Everything looked so festive! Thanks to Joanne Spitz for arranging for lunch from The Pita Stop and to Lisa Ohlhausen for picking it up and delivering it to CBS. Yasher Koach to Cantor Hasha and Avraham Yehoshua Weikersheimer for

(Religious School News continued on page 7)

A Note From The Cantor



Please help me celebrate 13 wonderful years at CBS.

On Saturday, January 31, 2009, 8:00 p.m., THE CANTOR'S BAT MITZVAH CONCERT features an array of wonderful talent. Don't miss my duet with Rabbi Rudolph. I'll be singing my heart out, too. I hope you can come.

My first cantorial position was at CBS in 1990, at the Yamim Nora'im, the High Holy Days (in the High Holiday Inn). I came back three times that year to participate in B'nai Mitzvah. Rabbi Remson's son, Ben, became Bar Mitzvah that year. This was the same year I began my cantorial studies.

I vowed that I would become a Cantor in 10 years or by my 50th birthday.

I was the Cantorial Soloist at the Congregation B'nai Jehoshua Beth Elohim for five years. I continued my cantorial studies. I called CBS and asked if they were looking for a cantorial soloist. Their answer was music to my ears. I have been here ever since.

In 2000, I passed my Cantorial exams and became a member of the Cantors Assembly, the Conservative Cantorial Association, and a certified Cantor with the American Conference of Cantors, the Reform Cantorial organization.

CBS is unique in many ways. We are a community of learners. Everything I learned, you learned too. From Klezmer to festival tropes, sign language and holiday nusakh, we have grown in our Jewish heritage and found new pathways to holiness.

Thank you for giving me this wonderful opportunity. It has been a treasure.

L'shalom,

Hasha Musha
Cantor Hasha Musha Perman

DROP IN AT OUR THURSDAY LUNCHTIME STUDY GROUP!

Join us for our lively and popular weekly lunchtime adult study group, on Thursdays from 11:30 am to 12:30 pm in the Congregation library. The subjects of study are traditional Jewish texts (in English).

Our current topic of study is the 613 mitzvot (commandments) in the Torah. We will study the appropriate Torah verses for each commandment and discuss how they are interpreted and followed and made relevant in today's world, from liberal, conservative, and orthodox perspectives.

We will not be using one specific text, but everyone is encouraged to bring in their favorite chumash or other Torah commentary, or use a text already available in the CBS library. Alternatively, the following two books are suggested: **The 613 Mitzvot: A Contemporary Guide to the Commandments of Judaism**, by Ronald L. Eisenberg, or **The Concise Book of Mitzvoth: The Commandments Which Can Be Observed Today**, compiled by The Chafetz Chayim.

Whether you can come regularly or only drop-in occasionally, join us for the energizing discussions and the joy of learning. You don't need to have been present from the beginning of this topic to join-in whenever you can.

For more information contact
Bernie Newman
 630-357-4544 or banewman22@aol.com

Read & Discuss: "J.B." and "The Dybbuk" by Dan Fraser

The Adult Education group has teamed up with the CBS Library's People of the Book reading group to offer some spectacular Fall/Winter reading. We will be reading (and discussing in January) two splendid plays:

The first one is titled *The Dybbuk*, or *Between Two Worlds* and is a 1914 play by S. Ansky, relating the story of a young bride possessed by a dybbuk — a malicious possessing spirit, believed to be the dislocated soul of a dead person — on the eve of her wedding. (this sentence borrowed from Wikipedia). It is a classic Jewish play.

The second book, *J.B.*, is a 1958 play by Archibald MacLeish that encapsulates an ingenious interpretation of the biblical book of Job. Set in a modern circus, two vendors begin the play-within-a-play by assuming the roles of God and Satan, respectively. The dialogue is so remarkable that it won a Pulitzer prize in 1959. Both of these plays are quite short and can be read in a couple of hours. Also, if you are not familiar with the book of Job (and even if you are), I recommend obtaining a copy of "The Book of Job" translated by Stephen Mitchell. Mitchell captures the brilliance of the book of Job in beautiful prose & poetry. It, too, is a fast read that provides an excellent background for J.B.

All of these books are available new or used from Amazon; order early to get the best selection and prices.

(From the Desk of the Rabbi continued from page 1)

132 were known to have survived.

(www.jewishvirtuallibrary.org/jsource/Holocaust/terezin.html)

From Prague, we will be traveling to Jerusalem, arriving shortly after the election there. In Israel we will be visiting some JUF projects and meeting with some government officials to discuss the election and its implication for Israel's future. Then, back to Naperville, where I will tell you all about it!

*"Travel, instead of broadening the mind,
 often merely lengthens the conversation."*
 - Elizabeth Drew

Rabbi Marc D. Rudolph

Monthly Meditation

The Sages used to meditate an hour before services to prepare themselves for prayer. On the fourth Friday of the month you can do the same at 7:15 pm in the Library, with Jewish Meditation Teacher Yonah Klem. Yonah will give a brief teaching and then we will meditate about 20 minutes. Beginning and experienced meditators are welcome.

CBS is proud to announce the 2nd year of

Apachi Day Camp

**MARK YOUR CALENDARS: CAMP DATES
 JUNE 15 - JULY 24 2009**

**BRAND NEW PROGRAM:
 for 5th & 6th graders
 APACHI ADVENTURES**

**Camp Registration will begin Dec 1.
 Check the CBS website in December for
 more information on camp and registration.
 Discounts for registering early!!**

Hebrew For Advanced Beginners

Please join us for a fun filled look at the Hebrew language. This four week course uses a book that has short stories which build upon your knowledge of the letters and the sounds that they make. You will learn dozens of simple vocabulary words as these Hebrew words are used in funny stories with cute illustrations. You will also learn to read some prayers.

YOU MUST REGISTER FOR THIS CLASS BY NOTIFYING THE OFFICE.

There is a limit of eight students for this class so sign up now! (And please only sign up if you are planning to attend most of the sessions, as you might be using up the last opening.)

Prerequisite: *The ability to recognize and know the sounds of the Hebrew letters.*

Instructor: *Judi Newman*

Location: *Home of Judi & Bernie Newman, 1552 Warbler Drive, Naperville*

When: *Sunday nights 7:30 - 9:00 pm, starting Feb 1, 2009*

Duration *four weeks*

You need to order your own book and bring it to the first class.

The New Siddur Program for Hebrew and Heritage Book 1

ISBN: 0874414967

Find books online at:

<http://behrman.powerwebbook.com/>

Or you could go to Amazon new or used, other sites too. Used books are around \$10.

Be sure to get Book 1, not book 2.

(Religious School News Continued from page 5)

offering great shiurim (classes) to help participants learn more about Israel. Our thanks to Diane and Brian Toby for leading Israeli dancing and to Karen Zatz for providing singing and music opportunities for everyone. Rabbi Rudolph, thanks for providing a beautiful and thoughtful introduction to the morning. Wasn't Geoff Adler an awesome MC? Thanks Geoff. The man behind the scenes, Brad Kolar, was gracious enough to say yes when I asked him if he would help with all things technological. A very special todah rabah to my friend and colleague, Fran Kraemer, whose energy, insight and vision was instrumental in making this morning a reality. It took a village, villagers and workers, to make it happen. You are all wonderful!

On Sunday January 11th, the 4th grade classes will get together for brunch at 10:35-11:35 AM and the 6th grade classes will gather for a pizza lunch at 12:45-1:45 PM. This is a perfect opportunity for the students to get to know each other better. RSVPs are needed so that we can purchase enough food for everyone. If you can help out with these activities, please call Barb Bernstein.

The 5th grade Family Education Day is scheduled for January 25 from 10:40 AM-12:40 PM. Each family will learn more about Havdalah and make a wooden Havdalah set to use to say good-bye to Shabbat each Saturday evening. Please let your child's teacher know that you will be in attendance.

Kibbutz Katan

With 2008 drawing to a close, the Kibbutz Katan Committee celebrated with Young Jewish Families from throughout the Western Suburbs at a very successful "We Can't Wait for Chanukah Party." We achieved our highest attendance yet at this program (over 130 people RSVPed). And, this party truly offered a little something for all of the 35+ families who attended the program...

- Cantor Hasha Musha Perman's lovely music and warm presence
- Rabbi Rudolph's engaging and interactive telling of the Story of Chanukah
- A multitude of crafts (edible and permanent) to entertain children young and old
- An impromptu Chanukah song sing-a-long led by Karen Zatz
- Wonderful vegetarian pizza, salads, and mac & cheese donated by the Lisberg family and Pockets



- Tasty latkes provided by Trader Joe's at a steep discount in support of our program

Thanks to the diligence of the PR Committee, we were pleased to host representatives from the Naperville Sun at this program. For anyone who missed the resulting article, check out this link on the CBS website: <http://bethshalomnews.blogspot.com/2008/12/cant-wait-for-hanukkah-featured-in.html>.

Jen Weiner did a fantastic job leading this program – with the support of an excellent team including: Cara Degraff, Laura Guttman, Jojo Lisberg, Stephanie Matthews, Kara Novins, Monica Pavuk, Toni Reiss McCann, Gina Shugar, Elizabeth Sigale, and Karen Zatz.

I hope that all of you are – like us – looking forward to a wonderful year of programs for Young Jewish Families in 2009. Here's a quick snapshot of upcoming Kibbutz Katan programs in January and February...

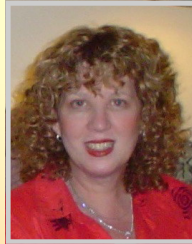
On Saturday, January 17th, and Saturday, February 21st (the 3rd Saturday of each month) Karen Zatz will lead a Tot Shabbat Music Program from 9:30 – 10:30am. In honor of Tu B'shevat, our January program will feature songs and treats themed around Trees & Nature.

On Wednesday January 7th and Wednesday, January 21st, the Playgroup will be gathering – first in Hinsdale and then in Oswego. We'll continue this semi-monthly pattern on into February and beyond. (Send an email to Elizabeth at kibbutzkatan@napershalom.org to join the playgroup mailing list to receive updates with details about each meet-up.)

We look forward to praying and playing with everyone in 2009!

From the CBS Preschool

By Robin Frisch



The Gift of Time...

Today was our Early Learning Center Hanukkah Luncheon. A wonderful time was had by all!

By the time you read this, Hanukkah will be long gone and winter will be firmly upon us. But for right now, all of the children are very excited about our holiday of eight days and eight nights. Somewhere along the way, many families have taken up the tradition of giving a present to each child on every night of Hanukkah. However, in these challenging economic times, this may not have been possible for many families this past year. And this may have been the greatest gift of all.

I know that families hear from many sources that presents are not what is important, but spending time with your child is crucial to their emotional beings. I would like to give you one more source, the children

("Learning How They Learn" Continued on page 18)



Jewish Employment Network

Job Seekers experience many hopes and challenges in the job market. If you have been recently downsized or are thinking of changing careers, the Jewish Employment Network offers numerous options to assist you with your career goals: career counseling, job search strategies, networking opportunities, and access to monthly round tables and support groups.

For more information
go to www.jvschicago.org
Or call

Joyce Bogolub, JVS Career Counselor
at 630-889-0548

Jewish Federation Academic Scholarship Program

Educational scholarship funds from grants administered by the Jewish Federation of Metropolitan Chicago are available for Jewish college and graduate students. More than \$500,000 each year is available for full-time students, predominantly those legally domiciled in the metropolitan Chicago area, who are identified as having promise for significant contributions in their chosen careers. Assistance is available primarily for those in need who are pursuing careers in the helping professions.

Jewish Vocational Service (JVS) processes academic scholarship applications from eligible students who have financial needs that cannot fully be met by other appropriate resources.

The application deadline for the 2009-2010 academic year is February 16, 2009.

For more information:

call: (312) 673-3457

Or

e-mail jvsscholarship@jvschicago.org

Lobby Access

Please note that the **CBS Lobby Front Door** and the **Circular Drive** and its surrounds are for quick drop offs.

Please Do Not Park In This Area

This has been an ongoing problem on Tuesday afternoons and Sunday mornings during Religious Ed Classes when the flow of traffic through this area is significant.

*Everyone's cooperation is vital
for the safety of our children.*

Thank you for your cooperation
on this most important matter.

Library News

The first meeting of the People of the Book Club was well attended and featured a stimulating and enlightening discussion of life in Poland before and during the Holocaust. In January, as joint programming with the Adult Education Committee, the People of the Book Club's second meeting will feature two plays, which will be discussed on two consecutive Sunday mornings. J.B., an ingenious, Pulitzer Prize winning 1958 play by Archibald MacLeish that is based on the Book of Job, will be discussed on January 11, 2009, at 10:30 am. The Dybbuk, a classic 1914 play by S. Ansky about a bride possessed by a malicious spirit, will be discussed on January 18, 2009, at 10:30 am., and Both sessions will be led by Dan Fraser.

The third meeting of the People of the Book Club is scheduled for Sunday, March 15, 2009, at 9:00-10:00 am. The book to be discussed will be The Invisible Wall by Harry Bernstein. This is the story of a neighborhood divided by a street, on one side of which live the Jews and on the other side live the Gentiles.

Have you seen the new cookbook section on the bookcases between the windows in the CBS Library? We have some great finds, including Jewish Holiday Cookbook by Joan Nathan, Kosher by Design by Susie Fishbein, Mother and Daughter Jewish Cooking by Evelyn Rose and Judi Rose, The Complete Passover Cookbook by Av Rutick, and Let My People Eat: Passover Seders Made Simple by Zell Schulman. Stop in and browse or check out one of these great books or any of the others in our collection of cookbooks.

Be sure to check the shelves and the display rack on the card catalog for new items. New books and publications are always being added, sometimes even before their cards reach the card catalogue. Feel free to browse the shelves or contact Gerry Mendelssohn if you are wondering if the Library has something specific, since she knows what books might be available, even though they are awaiting processing.

The support of the Congregation for the Library is always appreciated. Donations to the Library Fund and donations of books in good condition are gratefully appreciated. They allow the Library collection to continue to grow and the usability of the room to be enhanced.

Library Hours

The library is open when the synagogue is open.

Monday 9-2,
Tuesday, Wednesday. & Thursday 9-5,
Friday 9-2
Sundays When Religious School is in Session

Donations of Jewish Books or Cash are Always Welcome

For more information about our library, volunteering your time
your time or writing book reviews, please call:
Gerry Mendelssohn at 630-416-2195

When Someone You Care About Is Ill: Making Your Mitzvah Matter

Hosted by the Care Center Jewish Care Service program and the Jewish Healing Network of Chicago, this two-part program will feature:

- ☆ *A rabbi-led, text-based study about the Mi Shebeirach prayer and its call to action*
- ☆ *A presentation about meaningful and strategic ways to help us help others facing a serious illness.*
- ☆ *The presentation will include dos and don'ts, guidelines for bikur cholim visits and more.*

Midwest Palliative

&

Hospice Care Center

2050 Claire Court, Glenview

Sunday, February 22, 2009

2:30-4:30 p.m.

For more information about this event,
call (847) 556-1575

or visit

<http://www.carecenter.org>

Letters From Jekabpils

News from the Jewish Community in Jekabpils, Latvia
Relayed to Kay Hyman

The bitter cold of Winter has already set in in Jekobpils. Many elderly people there are very needy especially at this time of the year as their pensions are not adjusted to the cost of living.

Medicines are always needed and welcomed. Please bring medicines to the synagogue office where I will pick the packages up.

This letter was delivered after Sukkot so that is why the those holidays were mentioned.

The following letter has been translated verbatim:

Dear Members of Beth Shalom Synagogue!

Please accept our sincere congratulations with one of the most and joyful holidays--Sukkoth, as well as Simcha Torah--the most joyful holiday of a year, ending the cycle of the New Year Holidays. Let the New Year be a year of peace and well being for us and for all Jewish People.

We wish you all the best and a well off, healthy, happy New Year!

Let all of you be inscribed in the Book of Life!

For our Community, the coming year will be especially difficult because the prices for heating and other utilities (electricity, water, rent...) were raised on 45%. Also raised the prices for food, medicine and medical services that are so crucial for the most of our community members.

We are very concerned about our invalids, pensioners and aged single people. We'll try to do our best to help them.

For the holiday of Rosh HaShona our community sends our best and thank you for your cordial kindness, generosity and responsiveness to our problems.

Thank you very much for your noble charity activity that allows us to help our people to survive.

On behalf of the Jekobpils Jewish Community Board,
Freyda Minsker Raya Legkodymova

Adult Education

In January, Adult Education Read and Discuss will join with the Library's People of the Book Club to discuss two short plays, *The Dybbuk* and *JB*.

On January 11, 2009, Dan Fraser will lead the discussion of *The Dybbuk* or *Between Two Worlds*, a classic 1914 play by S. Ansky. It relates the story of a young bride possessed by a malicious spirit (believed to be the dislocated soul of a dead person) on the eve of her wedding.

On January 18, Dan will lead the discussion of *JB*. *JB* is a 1959 Pulitzer Prize winning play by Archibald MacLeish that encapsulates an ingenious interpretation on the Book of Job. Set in a modern circus, two vendors begin the play-within-a-play by assuming the roles of God and Satan.

Dan reports that both plays are quick reads and also recommends the reading or re-reading of the Book of Job to facilitate the discussion *JB*.

The discussions, which both begin at 10:30 a.m., will be held during the second session of religious school.

Who wrote the Bible? That provocative question will be explored in three sessions to be taught by Irwin Gaines. The sessions will be held from 7:30 p.m. until 9:00 p.m. in the Youth Lounge on January 8, January 15, and January 22, 2009. This topic can be expected to lead to interesting and thought provoking discussions and perspectives.

A follow-up to Barbara Stewart's Read Hebrew America course will be offered starting on Sunday, January 25, 7:30-9:00 pm. for 4-6 Sundays. It will be taught by Judi Newman in her home. Enrollment may be limited, so it is **vital** and **necessary** that anyone wishing to attend these classes contact the CBS Office to reserve a space. Don't delay or forget; call **today** to take advantage of this wonderful class.

Several Adult Education offerings continue at CBS. Cantor Hasha Musha Perman is teaching an *Adult Bar/Bat Mitzvah* class, culminating in a B'nai Mitzvah service on June 20, 2009. The class will focus on Hebrew, history, ritual, Torah, and trope. Also continuing are the Thursday weekly lunchtime discussion of "*The 613 Mitzvot in*

Today's World", led by Bernie Newman in the CBS Library from 11:30am. to 12:30 pm. and the Torah Study of the weekly Parsha, led by Rabbi Rudolph in the CBS Library on Saturday mornings from 9:00-10:00 am.

Contact the CBS Office to sign up for these programs or for further information.

DONATIONS

Building Fund	For Major Building Modifications to Our Synagogue
Ira, Susan, Jason and Zachary Rubin	in memory of Adam Richardson
Sue & Pete Levine	in honor of the birth of Jan and Don Strauss's grandson
Sue & Pete Levine	in memory of Adam Richardson
Building Maintenance Fund	For Repairs to Our Synagogue
Diane & Jim Vojcek	in memory of our son, Raymond Roggenbuck
Cultural Arts Fund	provides funding for cultural events held at our synagogue
Ross Decent	in memory of Bernie Decent
Early Childhood Ed Fund	For Providing and Enriching a Weekday Program of Jewish and Secular education for 2, 3 and 4 Year Old Children
Lauri & Dave Covas	in memory of Frances Decent
Lynn & Ralph Kallmann	in honor of the naming of Linda and Gene Parker's granddaughters
Rita & Ken Kramen	in honor of the birth of Jan and Don Strauss's grandchild
Barbara & Charles Lipkin	in honor of the birth of Jacob Strauss Stern
Jan & Don Strauss	with thanks to all who helped us celebrate Jacob Strauss Stern's bris
Lynn & Ralph Kallmann	in honor of the birth and bris of Jan and Don Strauss's grandson
General Donations Fund	Projects and Purchases Not Covered by Our Budget or Other Dedicated Funds But in the Opinion of Our Board of Directors Would be Beneficial to Our Congregation
Carol & Jack Medor	in memory of Frances Decent
Jonathan Tischler	in memory of Max Tischler
Debbie & Craig Garber	in memory of Leah Hemmer
Debbie & Craig Garber	in memory of Gwen Abrahamson
Debbie & Craig Garber	in memory of Gilbert L. Paren
Rita & Ken Kramen	in honor of our anniversary
Linda & Gene Parker	in honor of Joshua Weikersheimer and with thanks to him for his help with the baby naming service of our two granddaughters
Jekabpils Fund	Supporting a Small Jewish Community in Latvia by Sending Them Packages of Needed Supplies, Placing Phone Calls to Remind Them They are Not Forgotten, and Helping Them in Various Other Ways
Terrie Stainman	in memory of Anne Stainman
Zena Goldenberg & Marc Swetlitz	wishing Rabbi Rudolph B'ruchim Haba'im
Kathleen Hyman	in memory of George Meyler
Lloyd Hyman	in memory of Elizabeth Leah Hyman
Vicki & Chuck Robinson	in memory of Mildred Fried
Elizabeth & Philip Branshaw	in honor of the Bar Mitzvah of Daniel Simon
Freyda Libman	in memory of Fay Moteff Kravitz and Jack Kravitz
Library Fund	For Purchasing Books for Our Synagogue's Library
Karen Hauser & Bruce Robkoff	in memory of Leonard Hauser
Sheila & Bob Fisher	in memory of Adam Richardson
Prayer Book Fund	purchasing prayer books for the services specified by the donors
Jan & Don Strauss	with thanks to Joshua Weikersheimer for his help in selecting a beautiful Hebrew name for our grandson, Jacob
Rabbi's Discretionary Fund	For Anonymously Helping Families in Need and Supporting Social and Religious Causes Deemed Important by Our Rabbi
Sandy & Fred Goldenson	in memory of Frances Decent
Sandy & Fred Goldenson	in memory of Dr. Robert Sultar
Sheila & Bob Fisher	in memory of Miriam Fisher
Carol & Walter Gruchala	in memory of Gwen Abrahamson
Elaine & Mike Beyer	in memory of Bernard and Kalah Reinschreiber
Patricia & Norman Katz	in memory of Adam Richardson
Patricia & Norman Katz	in honor of the baby naming of Linda and Gene Parker's grandchildren
Jan & Don Strauss	with thanks to Rabbi Rudolph for his help with our grandson's bris
Nancy Sohn & Mike Simon	in honor of Rabbi Marc Rudolph
Religious School Fund	Supporting the Jewish Education of Our Children by Purchasing Supplies and/or Paying for Special Events Not Normally Included Within the Budget of Our Religious School
Barbara Nicker Bernstein	in honor of the Bar Mitzvah of Zachary Kolar
Barbara Nicker Bernstein	in honor of the Bar Mitzvah of Corey Dufresne
Barbara Nicker Bernstein	in honor of the Bar Mitzvah of Blake Spitz
Abraham Sheinkman	in memory of Eugenia Aisenstadt
Sandy & Fred Goldenson	in memory of Mildred Fried
Torah Fund	For purchasing new Torahs and/or repairing our current Torahs when necessary
Paula & Daniel Fraser	in memory of Frances Decent
Paula & Daniel Fraser	in memory of Dr. Robert Sultar

Models Wanted

DuPage/Will Hadassah is sponsoring a Fashion Show Luncheon on May 17, 2009, at Congregation Beth Shalom.

The theme of the show is *Cheap Chic*.

We need women and children to model their own new clothes. The challenge is to purchase a fashionable outfit for as little as possible, not more than \$35/child, or \$50/adult.

Family groups are very welcome, i.e., grandmothers, mothers, and children.

Space is limited, so it's first come, first served.

Contact Rita Kramen to volunteer
Or
for more information:
815-254-9233
Rekteach@sbcglobal.net.

JUNIOR CONGREGATION 2009

If you are looking for an easy and fun way to celebrate Shabbat and learn Shabbat morning prayers, then come and check out Junior Congregation. Enjoy leading a service, being with friends, and eating our great kiddish snacks. We've seen some new faces this fall and look forward to meeting more of you when the New Year begins.

Junior Congregation Shabbat services will be held at 10:30 a.m. on the following dates starting in January:

- ✧ January 24 ✧ March 7
- ✧ February 7 ✧ March 21
- ✧ February 21 ✧ April 18
- ✧ May 2

This student lead service (with adult supervision) allows children the opportunity to be the gabbi, lead prayers in English or Hebrew, and take a part in our "Sedra Scenes" performances - great practice in public speaking and preparation for Bnai Mitzvot*. This Saturday morning Shabbat service is targeted for children who can read English well and are beginning to learn Hebrew (typically 3rd grade, though younger children do attend). Students in first grade and above may attend without an adult, though adults are welcome, space permitting.

Junior Congregation Shabbat services begin at 10:30 a.m. in the youth lounge and lasts approximately one hour, followed by Kiddish. Please pick up your child no later than 12:00 p.m. as the synagogue closes after services.

Please let us know if you'd be interested in hosting a Kiddish for this service.

Please contact Eileen Gelblat (630-355-7916 or eileen@gelblat.org) or Nadene Eisner (deme@tmail.com) for more information.

*The service can be part of pre-Bar/Bat Mitzvah students' service commitments. Ask us how.

UPCOMING EVENTS

Community Worship for January Page 4

Junior Congregation

January 24, February 7, 21,
March 7, 21, April 18, May 2 @ 10:30am

World Peace Day Interfaith Prayer Service

2:00 pm, January 1, 2009

Adult Education Book Club

Discussion of Short Play *The Dybbuk* by S. Ansky
10:30am, January 11, 2009

Board of Directors Meeting

January 13th 7:15pm

Seniors' Group

Wednesday January 14th, 1:00pm

Adult Education Book Club

Discussion of Short Play *JB* by Archibald MacLeish
10:30am, January 18, 2009

Monthly Meditation

January 23th 7:15pm

The Cantor's Bat Mitzvah Concert

Saturday, January 31, 2009 at 8:00 pm

2009 Barton's Passover Candy Sale Deadline

February 10

Jewish Federation Academic Scholarship Program

Deadline for the 2009-2010 academic year

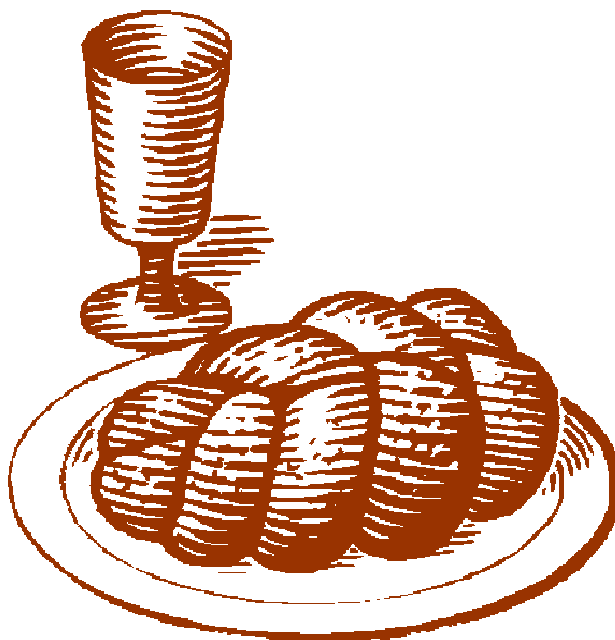
February 16, 2009

DuPage/Will Hadassah Fashion Show Luncheon at Congregation Beth Shalom

May 17, 2009

Apachi Day Camp

June 15 - July 24 2009



January 2009 Candle Lighting Times		
	January 2nd	4:13pm
	January 9th	4:20pm
	January 16th	4:28pm
	January 23rd	4:36pm
	January 30th	4:45pm

Quick Glance Weekly Schedule

*these recurring items are left off of the calendar
on the facing page due to space restrictions*

Sundays

8:30 am Sunday School
10:40 am Sunday School

Mondays

9:00am - 11:30am - Alef Class
11:30am - 12:45pm - Lunch Bunch
12:45pm - 3:15 pm - Bet Class
(Lunch Bunch is a pre-registered program
for children 4 yrs. old and older
that attend the Alef Bet class)

Tuesdays

9:00 - 11:30 am Honey Bears Class
4:30 pm Hebrew School

Wednesdays

9:00am - 11:30am - Alef Class
11:30am - 12:45pm - Lunch Bunch
12:45pm - 3:15 pm - Bet Class

Thursdays

9:00am - 11:30am - Honey Bears
11:30am - 12:45pm - Lunch Bunch (Bet class only)
11:30 am Text Study
12:45pm - 3:15 pm - Bet Class


Fridays

9:00am - 11:30am - Alef Class
11:30am - 12:45pm - Lunch Bunch
12:45pm - 3:15 pm - Bet Class
Monthly Family Shabbat 6:30 pm*
Evening Shabbat Service 8:00 pm**

Saturdays

9:00 am Torah Study
10:00 am Shabbat Service
*Family Shabbat See Calendar For Date
**Friday Night Live 7:15 pm
See Calendar for Date

J a n u a r y 2 0 0 9 T e v e t - S h e v a t 5 7 6 9

Sunday	Monday	Tuesday	Wednesday	Thursday	Friday	Saturday
				1/1/2009 5 Tevet 5769 11:30am Text Study	1/2/2009 6 Tevet 5769 6:30pm Young Family Service 8:00pm Kabbalat Shabbat	1/3/2009 7 Tevet 5769 9:00am Torah Study 10:00am Shabbat Shakharit
1/4/2009 8 Tevet 5769 No School Winter Break	1/5/2009 9 Tevet 5769	1/6/2009 10 Tevet 5769 Religious Ed Resumes	1/7/2009 11 Tevet 5769	1/8/2009 12 Tevet 5769 11:30am Text Study 7:30 pm Adult Ed "Who Wrote The Bible"	1/9/2009 13 Tevet 5769 8:00pm Kabbalat Shabbat Birthday and anniversary blessings	1/10/2009 14 Tevet 5769 9:00am Torah Study 10:00am Shabbat Shakharit Sixth Grade Chants Torah
1/11/2009 15 Tevet 5769 10:30am Adult Ed Read and Discuss "The Dybbuk."	1/12/2009 16 Tevet 5769	1/13/2009 17 Tevet 5769 7:15pm: Board of Director's Meeting	1/14/2009 18 Tevet 5769 1:00 pm Seniors Group	1/15/2009 19 Tevet 5769 11:30am Text Study 7:30 pm Adult Ed "Who Wrote The Bible"	1/16/2009 20 Tevet 5769 8:00pm Kabbalat Shabbat	1/17/2009 21 Tevet 5769 9:00 a.m. Torah study 9:30am Kibbutz Katan Tot Shabbat 10:00am Shabbat Shakharit Bar Mitzvah of David Kraemer
1/18/2009 22 Tevet 5769 10:30am Adult Ed Read and Discuss "J.B."	1/19/2009 23 Tevet 5769	1/20/2009 24 Tevet 5769	1/21/2009 25 Tevet 5769	1/22/2009 26 Tevet 5769 11:30am Text Study 7:30 pm Adult Ed "Who Wrote The Bible"	1/23/2009 27 Tevet 5769 7:15pm Meditation 8:00pm Kabbalat Shabbat	1/24/2009 28 Tevet 5769 9:00am Torah Study 10:00am Shabbat Shakharit 10:30am Junior Congregation
1/25/2009 29 Tevet 5769	1/26/2009 1 Shevat 5769	1/27/2009 2 Shevat 5769	1/28/2009 3 Shevat 5769	1/29/2009 4 Shevat 5769 11:30am Text Study	1/30/2009 5 Shevat 5769 8:00pm Kabbalat Shabbat	1/31/2009 1 Shevat 5769 9:00am Torah Study 10:00am Shabbat Shakharit 8:00 pm The Cantor's Bat Mitzvah Concert

February 2009 Shevat - Adar 5769

Sunday	Monday	Tuesday	Wednesday	Thursday	Friday	Saturday
2/1/2009 7 Shevat 5769	2/2/2009 8 Shevat 5769	2/3/2009 9 Shevat 5769	2/4/2009 10 Shevat 5769	2/5/2009 11 Shevat 5769 11:30am Text Study	2/6/2009 12 Shevat 5769 6:30pm Shabbat Family Service 8:00pm Shabbat Family Service	2/7/2009 13 Shevat 5769 9:00am Torah Study 10:00am Shabbat Service Bar Mitzvah of Keith Larson 10:30am Junior Congregation
2/8/2009 14 Shevat 5769	2/9/2009 15 Shevat 5769	2/10/2009 16 Shevat 5769	2/11/2009 17 Shevat 5769	2/12/2009 18 Shevat 5769 11:30am Text Study	2/13/2009 19 Shevat 5769 8:00pm Shabbat Service (Birthday and Anniversary Blessings)	2/14/2009 20 Shevat 5769 9:00am Torah Study 10:00am Shabbat Service Bat Mitzvah of Brittany Karlin Bat Mitzvah of Lauren Karlin
2/15/2009 21 Shevat 5769	2/16/2009 22 Shevat 5769	2/17/2009 23 Shevat 5769	2/18/2009 24 Shevat 5769	2/19/2009 25 Shevat 5769 11:30am Text Study	2/20/2009 26 Shevat 5769 7:30pm Friday Night Live/ Synaplex 8:00pm Traditional Shabbat Service	2/21/2009 27 Shevat 5769 9:00am Torah Study 9:30am Kibbutz Katan 10:00am Shabbat Service 10:30am Junior Congregation
2/22/2009 28 Shevat 5769	2/23/2009 29 Shevat 5769	2/24/2009 30 Shevat 5769	2/25/2009 1 Adar 5769	2/26/2009 2 Adar 5769 11:30am Text Study	2/27/2009 3 Adar 5769 8:00pm Shabbat Service	2/28/2009 4 Adar 5769 9:00am Torah Study 10:00am Shabbat Service Bat Mitzvah of Rachel Adam



2009 Barton's Passover Candy Sale

All funds raised benefit the CBS Early Learning Center!

Purchase your Passover candy, macaroons, Seder gifts

AND

support the children and programs of the ELC!

*Please fill out the order form and return it
to the Temple office no later than February 10.*

Your check made out to

CBS ELC

must accompany your order.

*Order forms and a color brochure will also be available in the
Temple lobby.*

Thank you for supporting the CBS ELC!

("Learning How They Learn" Continued from page 9)
 themselves.

An important part of our curriculum is a concept called "Rock Time". At the start of class, we sit in a circle and each child has a turn holding a special rock. When a child is holding the rock it is that child's turn to speak while everyone listens. Every child gets a turn to talk at "Rock Time". This activity is excellent for preparing young children to speak in front of groups with poise and self-confidence, a skill they will need all of their lives.

When the children have the rock, they rarely talk about presents or gifts they have received. What they do talk about is family outings. They talk about how much fun they had apple picking, sledding, going to

visit Nonny and Poppy, making a snowman on their front lawn, baking cookies, helping to clean the basement (really and truly!), going to Cosley Zoo, visiting downtown Chicago, on and on and on.

They absolutely glow with delight as they describe these family outings and activities.

So, though another Hanukkah has now come and gone, there are still plenty of opportunities for the best gift of all that you can give your children. Yes, it really is the gift of your time. Giving of your time is what makes the children feel special, important, and yes, very, very, loved and cherished. There could not be a better gift in all the world, no matter what the time of year . . .

MISS CHOCOLATE PRESENTS
CBS Early Learning Center PASSOVER 2009 Candy Sale

DEAR CONGREGANT:

WE WILL BE CONDUCTING OUR ANNUAL PASSOVER CANDY SALE DURING THE MONTH OF JANUARY. WE WILL BE SELLING BARTONS U AND BARRICINI KOF-K KOSHER FOR PASSOVER CONFECTIONS. EVERY PACKAGE WILL HAVE ONE OF THESE SEALS OF KASHRUTH. OUR PERSONAL CONSIDERATION WILL BE GIVEN TO ALL ORDERS, HOWEVER LARGE OR SMALL. LET US TAKE CARE OF YOUR PASSOVER HOLIDAY NEEDS. IF YOU ARE INTERESTED IN PURCHASING PASSOVER CANDY, MACAROONS, ETC., PLEASE FILL OUT THE ORDER FORM BELOW AND MAIL IT TO THE TEMPLE WITH THE CORRECT PAYMENT. YOUR CHECK MUST ACCOMPANY YOUR ORDER. PLEASE MAKE CHECK PAYABLE TO **CBS ELC**. THANK YOU!

LETTER	BARTONS ITEM DESCRIPTION	QTY.	PRICE	TOTAL	NUMBER	PASSOVER PLUS ITEM DESCRIPTION	QTY.	PRICE	TOTAL
A.	CHOCOLATE MACAROONS (P)		\$9.00		248	SHOE ORGANIZER		\$12.50	
B.	VANILLA MACAROONS (P)		\$9.00		378	SALAD SERVER		\$6.50	
C.	CHOC. COV. MARSHMALLOWS (P)		\$13.75		725	CELL PHONE/MP3 HOLDER		\$7.50	
D.	CHOC. COV. MACAROONS (P)		\$12.75		1265	MICROWAVE SPLATTER SHIELD		\$5.50	
E.	CHOC. MINT DIAMONDS (P)		\$10.50		2625	MILK CHOC. EGG MATZOH SHEETS (D)		\$11.00	
F.	FRUIT SLICES (P)		\$15.00		2653	DK. CHOC. JEWISH SYMBOL POPS (P)		\$6.50	
G.	DARK CHOCOLATE MATZO (P)		\$15.50		2680	DK. CHOC. PLAIN MATZOH SHEETS (P)		\$11.00	
H.	CHOC. COCONUT CRÈME DEL. (P)		\$13.75		2715	DK. CHOC. CARMEL PECAN CLUST.(P)		\$8.50	
I.	SEDER MINTS (P)		\$11.75		3290	MILK CHOC. ALMOND TOFFEE (D)		\$11.00	
J.	RASPBERRY CHOC. JELLIES (P)		\$12.75		6942	FLOWER CLIPS – SET OF 3		\$8.50	
K.	ALMOND BARK (P)		\$11.50		7955	GRANDCHILDREN COLLAGE FRAME		\$8.00	
L.	MILK & DARK CHOC. ASS'T. (D)		\$16.50		8563	JAR OPENER		\$6.00	
M.	ALMOND BUTTER CRUNCH (D)		\$15.75		9165	SUNGLASS VISOR CLIP		\$5.00	
N.	ALMOND KISSES (D)		\$16.50		9538	SIPPER ICE-POP MAKER		\$6.75	
O.	CASHEW BUTTER CRUNCH (D)		\$11.75						
P.	CHOC. CARAMEL DAISIES (D)		\$11.75						TOTAL-B:
Q.	CHOC. PECAN CARAMEL CLUST. (D)		\$15.50						TOTAL-A:
R.	MILK CHOCOLATE MATZO (D)		\$15.50						
S.	ALMOND CARAMEL NUT CLUST. (D)		\$13.25						
T.	LOLLYCONES (D)		\$6.75						
U.	SOLID MILK CHOC. DIAMONDS (D)		\$10.50						
NOTE: ALL ITEMS CAN BE VIEWED ON OUR WEBSITE.				TOTAL -A:				GRAND TOTAL:	

Name: _____ Phone#: _____

THIS IS OUR PASSOVER PROMOTION. PLEASE BRING OR MAIL IN THIS ORDER FORM WITH YOUR CHECK PAYABLE TO OUR ORGANIZATION. ALL ORDERS MUST BE RECEIVED BY **FEBRUARY 10**. VISIT OUR WEBSITE AT WWW.MISSCHOCOLATE.COM ** SEE OUR ON-LINE ORDERING SERVICE

Chesed Committee

Please help us fulfill mitzvot – call the synagogue office or your Chesed Committee Area Captain to let us know when you or someone you know is in need of assistance.

Co-Chairs

Bob Fisher
630-369-6680
bob1fisher@aol.com

Carole Kerr
630-355-1115
kerr_c@sbcglobal.net

Area	Captain	Phone Number
1	Debra Cohen	630-961-4965
1	Sara Scheiner	630-717-9811
1	Tara Gregus	630-527-9307
2	Elaine Beyer	630-668-5231
2	Nikki Martin	630-966-0933
2	Judy Stradley	630-378-9587
3	Russ Klem	630-369-8260
3	Adrienne Golinkin	630-355-5928
3	Sari Ross	815-254-3054
4	Terrie Stainman	630-355-9908
4	Bob and Sheila Fisher	630-369-6680
5	Elizabeth Branshaw	630-262-1332
5	Rachel and David DePorte	630-898-8436
5	Geoff Adler	630-236-5767
Shiva	Joshua Weikersheimer	630-969-4148
Shiva	Bernie Newman	630-357-4544

Zip Code	City	Area	Zip Code	City	Area	Zip Code	City	Area
19087	Wayne, PA	4	60441	Lockport	5	60526	Lagrange Park	4
20833	Brookeville, MD	4	60446	Romeoville	5	60532	Lisle	4
53140	Kenosha, WI	4	60490	Bolingbrook	5	60538	Montgomery	2
60076	Skokie	4	60502	Aurora	5	60540	Naperville	3
60131	Franklin Park	4	60503	Aurora	5	60542	North Aurora	5
60134	Geneva	5	60504	Aurora	5	60543	Oswego	5
60137	Glen Ellyn	4	60506	Aurora	5	60544	Plainfield	5
60185	West Chicago	5	60507	Aurora	5	60555	Warenville	4
60187	Wheaton	2	60510	Batavia	5	60561	Darian	4
60188	Carol Stream	4	60514	Clarendon Hills	4	60563	Naperville	4
60190	Winfield	2	60515	Downers Grove	5	60564	Naperville	2
60404	Shorewood	5	60516	Downers Grove	4	60565	Naperville	1
60435	Joliet	5	60517	Woodridge	3	60585	Plainfield	5
60440	Bolingbrook	5	60523	Oak Brook	4	60586	Plainfield	5
						60615	Chicago	4



Yahrzeits to be observed during January 2009

Family Member	Yahrzeit Name	Hebrew Yarzeit Date	Secular Yarzeit Date	Memorial is Lit
Eliot Landau	Rebecca Raffel Goltz	7 Tevet 5769	1/1/1974	X
Robyn Goldman	Oscar Speck	7 Tevet 5769	12/30/1995	
Herbert Golinkin	Abraham Golinkin	9 Tevet 5769	12/30/1968	X
Carol Keeth	Nancy Shlensky Jacobson	9 Tevet 5769	1/9/2006	
Steve Rochlis	Ethel Rochlis	10 Tevet 5769	1/8/1998	
Elaine Fisher	Jack Skolnick	10 Tevet 5769	1/10/2006	
Michael Kaufman	Tillie Kaufman	11 Tevet 5769	12/26/2001	
Deborah Friedman	Seymour Miller	11 Tevet 5769	12/26/2001	X
Steve Rubin	Naomi Rubin	11 Tevet 5769	12/26/2001	X
Pete Levine	Louis Levine	11 Tevet 5769	1/5/2004	X
Jill Holtzman Larson	Jennie Greenspon	12 Tevet 5769	1/1/1980	
Robert Kalinsky	Ruth Oswald	12 Tevet 5769	12/31/1998	X
Thomas Wolff	Marcy Epstein Wolff	12 Tevet 5769	12/17/2002	X
Diane Vojcek	Ray Roggenbuck	12 Tevet 5769	12/24/2004	X
Kim Davis-Shatinsky	Elizabeth Davis	12 Tevet 5769	12/21/2007	
Emily Levin	Jules Greenzweig	13 Shevat 5769	2/4/1993	
Alice Sklar	Abraham Winetsky	13 Tevet 5769	12/31/1971	
Harvey Gressgott	Dorothy Gressgott	14 Tevet 5769	1/11/1990	
Jill Kapson	Bertrand Howard Rosenberg	15 Tevet 5769	12/27/1985	X
Susan Ganden	Louis Meyers	15 Tevet 5769	12/24/1999	
Keith Sigale	Myron Sigale	17 Tevet 5769	1/11/2004	
Lloyd Hyman	Elizabeth Leah Hyman	18 Tevet 5769	12/25/1980	
Eliot Landau	Bernard Landau	18 Tevet 5769	12/30/1985	X
Terry Naster	Hyman W Naster	19 Tevet 5769	1/18/1979	X
Alberto Grosz	Tiberio Grosz	20 Tevet 5769	1/3/1975	
Joni Blackman	Esther G. Hirsch	20 Tevet 5769	12/29/1999	X
Jonathan Tischler	Max Tischler	20 Tevet 5769	1/15/2001	X
Alene Mangino	Sophie Abelson	21 Tevet 5769	1/7/1991	
Sharon Glass	Jacqueline Brodsky	21 Tevet 5769	1/13/1996	
Carol Keeth	Barbara Smith Tustin	21 Tevet 5769	1/13/1996	
Scott Smith	Barbara Smith Tustin	21 Tevet 5769	1/13/1996	
Larry Pearlman	Barbara Pearlman	21 Tevet 5769	12/31/1996	X
Bob Fisher	Miriam H Fisher	22 Tevet 5769	1/1/1997	X
Phyllis Fee	Harold Fee	23 Tevet 5769	1/1/2000	X
Robin Leckinger	David Blatt	23 Tevet 5769	1/18/2001	
Barbara Lipkin	Zena Friedman	24 Tevet 5769	1/2/2000	X
Kathleen Hyman	George Meyler	25 Tevet 5769	1/23/1952	
Herbert Golinkin	Sophie Moss	25 Tevet 5769	1/9/1956	
Gail Sonkin	Weston Bryce Sonkin	25 Tevet 5769	1/6/1986	X
Laura Karlins	Hyman Garvin	25 Tevet 5769	1/2/1989	X
Bernie Silverman	Lillian Melchoir	25 Tevet 5769	1/3/1997	X
Katherine Horning	Julius Berman	26 Tevet 5769	12/31/2002	
Rebecca Hoover	Julius Berman	26 Tevet 5769	12/31/2002	
Jeffrey Shapiro	Sydonia Goodstein	27 Tevet 5769	1/15/1980	
Trudy Lythberg	Rose Shepell	27 Tevet 5769	1/24/1990	
Frieda Chernobrov	Leib Abramovich	27 Tevet 5769	12/30/1994	X
Bill Deitch	Meyer Deitch	28 Tevet 5769	1/23/2001	
Vida Goldstein	Margaret Goldstein	29 Tevet 5769	1/15/1991	
Fred Goldenson	Rose Abrams	29 Tevet 5769	1/8/1997	



Yahrzeits to be observed during January 2009

Family Member	Yahrzeit Name	Hebrew Yahrzeit Date	Secular Yahrzeit Date	Memorial is Lit
Robin Frisch	Doreen Miner	29 Tevet 5769	1/8/1997	
John Young	John E Young	1 Shevat 5769	1/15/1983	
Charles Aranoff	Janice E Aranoff	1 Shevat 5769	1/23/1985	X
Warren Ganden	Ida Ganden Spanglet	1 Shevat 5769	1/23/1993	
Michael Remson	Yetta R Remson	1 Shevat 5769	1/22/1996	X
Barry Glicklich	Jack Rosenberg	1 Shevat 5769	1/11/2005	
Helane Schwartz	Solomon Ovadia	2 Shevat 5769	1/29/1952	X
Cindy Levy	Lena Mozer	5 Shevat 5769	1/11/1989	X
Eliot Landau	Alphonse Michael Squillante	5 Shevat 5769	1/22/1999	
Alan Rosenzweig	Phillis Rosenzweig	5 Shevat 5769	1/24/2007	
Katherine Horning	Susan Cantele	6 Shevat 5769	1/25/2007	
Rebecca Hoover	Susan Cantele	6 Shevat 5769	1/25/2007	
Phil Doukas	Helen Doukas	7 Shevat 5769	1/14/2000	
Janice Liang	Sol Ceresnie	8 Shevat 5769	2/3/1990	
Frieda Chernobrov	Liba Abramovich	8 Shevat 5769	1/11/2003	X
Aizik Chernobrov	Doba Chernobrov	8 Tevet 5769	12/17/1996	X
Ross Decent	Bernard Decent	8 Tevet 5769	12/26/1998	
David DePorte	Esther DePorte	8 Tevet 5769	1/3/2001	
Francine Navakas	Jo Ann Panzer	9 Shevat 5769	2/4/1990	X
Jacquelyn Kagan	Martin Nemenoff	9 Shevat 5769	1/22/2002	
Alice Silverman	Stuart Michael Fidler	9 Shevat 5769	1/19/2005	X
Eliot Landau	Rabbi Isadore Landau	10 Shevat 5769	1/31/1966	X
Paul Abelson	Israel Ben Abelson	10 Shevat 5769	1/29/1977	X
Ken Kramen	Edward Kramen	10 Shevat 5769	1/24/1983	
Philip Edelsberg	Rae Edelsberg	11 Shevat 5769	1/18/1970	
Laurie Winkelman	Roberta Levitt	11 Shevat 5769	2/9/2006	
Jeffrey Lerner	Lawrence Lerner	11 Shevat 5769	1/30/2007	
Seymour Bloom	Allen Bloom	11 Shevat 5769	1/18/2008	
Selena Rochlis	Eva Golinkin	12 Shevat 5769	2/5/2001	X
Herbert Golinkin	Eva Golinkin	12 Shevat 5769	2/5/2001	X



Jewish United Fund/Jewish Federation
of Metropolitan Chicago

Ben Gurion Way 30 South Wells Street Chicago, Illinois 60606-5056
TEL: (312) 346-6700 ☆ FAX: (312) 855-2474 ☆ Website: www.juf.org

LEARN MORE ABOUT CAMP TOV 2009!

Looking for an exciting and rewarding summer experience? Camp TOV is a week-long, fun and interactive service-oriented day program on wheels. In August 2009, teens from throughout the city and suburbs of Chicago will be brought together for what promises to be a memorable summer learning experience!

For more information or to be added to our mailing list, please contact:
Brett Klugman at **312-357-4928** or BrettKlugman@juf.org.

Cultural Arts Committee



Our mission is to bring Jewish arts to the western suburbs. Recent activities have included Purim spiels with original music, comedy, and drama, concerts with guest artists, and movies. But we could have an art show or a story-teller, or any Jewish art you'd like to see or hear.

Please join us! Share your ideas and skills! We have some exciting events scheduled for 2008-2009, and we need your help with them. These include our annual Chanukah Concert in December, and a new Purim play at the end of February. The title has not yet been revealed, but it will be a completely original, hilarious musical showing the Bible as it's never been seen before! Entire families will again be encouraged to participate in the play in some capacity, and the rehearsal schedule will be arranged to minimize the time each cast member is needed. Think about joining the cast or the crew. You could be the next star!

And if you have ideas for additional programming, including any type of Jewish arts, we'd love to hear them. No talent is required; a variety of jobs need to get done, from taking tickets to designing programs to selecting movies we can show.

Please contact Linda Gaines (lgaines@anl.gov or 630-420-1452) or Cantor Perman if you would like to be on the committee, or just want more information.

The American Jewish Artists Club

The American Jewish Artists Club is currently accepting new members. The group was founded in the 1920's. The group's primary obligation is two-fold: to focus upon the broad aspects of artistic performance and to enlighten and enrich the cultural fiber of the Jewish Community, thereby contributing to the fabric of the community at large.

For information, please call
Livia Ayal, 773-743-0469
or
Barbara Lipkin, 630-637-0814

Kitchen Angels Needed

The Chesed Committee is looking for people who are willing to cook on a regular basis for those in need. If you would like to be called once a month to either cook or assemble a meal, please contact Bob Fisher or Carole Kerr to add your name to the list.

Bob Fisher (Bob1Fisher@aol.com)

Or

Carole Kerr (kerr_c@sbcglobal.net)

Family Order Form

Created: 9/5/2008 5:03:37 PM

Congregation Beth Shalom/Naperville, IL

MITZVAH MONEY
Where shopping is a MITZVAH!!!!

Name			Customer #
Address			Order Date
City	State	Zip	Check #

Apparel & Accessories			
Product	%	Qty	Total
American Eagle Outfitters \$25	9%		\$
Brooks Brothers \$25	16%		\$
Claire's \$10 (No fee card)	9%		\$
Dressbarn \$25	8%		\$
Eddie Bauer \$25	9%		\$
Express \$25	13%		\$
Ft. Locker \$25	9%		\$
Gap / Banana / Old Navy \$25	9%		\$
Lands' End \$25	19%		\$
Lands' End \$100	19%		\$
Limited \$25	9%		\$
Men's Wearhouse \$25	8%		\$
Payless Shoes \$20	13%		\$
Talbots \$25	11%		\$
The Children's Place \$25	12%		\$
TJ Maxx/Marshall's \$25	7%		\$
TJ Maxx/Marshall's \$100	7%		\$
Department Store			
Product	%	Qty	Total
Bloomingdale's \$25	12%		\$
Bloomingdale's \$100	12%		\$
JCPenney \$25	6%		\$
JCPenney \$100	6%		\$
Kohl's Dept. Store \$25	4%		\$
Kohl's Dept. Store \$100	4%		\$
Lord & Taylor \$25	8%		\$
Macy's/Federated \$25	10%		\$
Macy's/Federated \$100	10%		\$

Sears \$25 Gift Card	4%		\$
Sears \$100 GIFT Card	4%		\$
Sears \$250 Card	4%		\$
Younker's/Bon Ton/Carson Pirie Scott \$25	8%		\$
Younker's/Bon Ton/Carson Pirie Scott \$100	8%		\$
Dining - Casual			
Product	%	Qty	Total
Applebee's \$25	8%		\$
BD's Mongolian BBQ \$20	8%		\$
Boston Market \$10	12%		\$
Buca di Beppo \$25	8%		\$
California Pizza Kitchen \$10	4%		\$
Champps Restaurant \$25	5%		\$
Cheesecake Factory \$25	5%		\$
Chuck E Cheese \$10	8%		\$
Claim Jumper \$25	8%		\$
Cracker Barrel \$10	9%		\$
Dave & Buster's \$25	13%		\$
Lou Malinai's \$10	8%		\$
Max & Erma's \$20	13%		\$
Old Country Buffet / Ryan's \$25	5%		\$
Outback / Carrabas \$25 Card	5%		\$
Red Lobster/Olive Garden \$25	9%		\$
Red Robin \$10	9%		\$
Rock Bottom / Old Chicago \$25	6%		\$
Ruby Tuesday's \$25	8%		\$
Sweet Tomatoes / Souplantation \$10	8%		\$
Uno Chicago Grill \$25	12%		\$

Dining - Fine			
Product	%	Qty	Total
Lettuce Entertain \$25	12%		\$
Dining - On The Go			
Product	%	Qty	Total
Burger King \$10	4%		\$
Chipotle Mexican Grill \$10	10%		\$
Domino's \$5	5%		\$
Domino's \$14 Pizza & 2-liter	25%		\$
Dunkin Donuts \$10	4%		\$
Fazoli's \$25	7%		\$
Jamba Juice \$10	7%		\$
KFC \$5	9%		\$
Panera Bread \$10	9%		\$
Pizza Hut \$10	8%		\$
Qdoba \$25	7%		\$
Starbucks \$10	7%		\$
Starbucks \$25	7%		\$
Discount Store			
Product	%	Qty	Total
Kmart \$25	4%		\$
Kmart \$50	4%		\$
Electronics & Office			
Product	%	Qty	Total
Best Buy \$25	2%		\$
BEST BUY \$100	2%		\$
Best Buy \$250	2%		\$
Circuit City \$100	3%		\$
Office Depot \$25	4%		\$
Office Max \$25	5%		\$
Staples \$25 Gift Card	5%		\$
Staples \$100	5%		\$

Make Checks Payable To: *Congregation Beth Shalom*

Total Due All Columns: \$

Family Order Form

Created: 9/5/2008 5:03:37 PM

Congregation Beth Shalom/Naperville, IL

MITZVAH MONEY
Where shopping is a MITZVAH!!!!

Name			Customer #
Address			Order Date
City	State	Zip	Check #

Entertainment			
Product	%	Qty	Total
AMC Theaters / Loew's Cineplex \$25	7%		\$
Barnes & Noble/B.Dalton \$10	10%		\$
Barnes & Noble/B.Dalton \$25	10%		\$
Barnes & Noble "Teacher Gift" Card \$20	10%		\$
Blockbuster \$10	7%		\$
Blockbuster Night Card \$12.00	15%		\$
Blockbuster Single Game \$6	15%		\$
Blockbuster Single Movie Rental \$3.79	15%		\$
Borders / Waldenbooks \$10	9%		\$
Borders / Waldenbooks \$25	9%		\$
Cinemark Cinema \$25 Card	4%		\$
Gas & Auto			
Product	%	Qty	Total
BP Gas Stations \$50	2%		\$
Exxon/Mobil \$50 All States	1.5%		\$
Kwik Trip \$20	4%		\$
Marathon \$25	3%		\$
Marathon \$100	3%		\$
Speedway / SuperAmerica \$25	4%		\$
Speedway / SuperAmerica \$100	4%		\$
Grocery			
Product	%	Qty	Total
Albertsons/Jewel \$25 Card	4%		\$
Albertsons/Jewel \$100 Card	4%		\$
Safeway \$25	4%		\$
Safeway \$100	4%		\$

Home Decor			
Product	%	Qty	Total
Bed Bath & Beyond \$25	7%		\$
Crate & Barrel \$25	8%		\$
Crate & Barrel \$100	8%		\$
Linens 'N Things \$25	8%		\$
Pier 1 \$25	9%		\$
Pottery Barn / Williams Sonoma \$25	8%		\$
Restoration Hardware \$25	12%		\$
Restoration Hardware \$100	12%		\$
Home Improvement			
Product	%	Qty	Total
Home Depot \$25	3%		\$
Home Depot \$100	3%		\$
Lowe's \$25 Gift Card	4%		\$
LOWE'S \$100 Gift Card	4%		\$
Menard's \$100	3%		\$
Menard's \$25	3%		\$
Online & Mail Order			
Product	%	Qty	Total
Amazon.com \$25	4%		\$
iTunes \$15	4%		\$
LL Bean \$25	15%		\$
LL Bean \$100 Card	15%		\$
Service			
Product	%	Qty	Total
Ulta Salons \$25	4%		\$
Specialty Retailer			
Product	%	Qty	Total
Bath & Body Works \$10	13%		\$

Bath & Body Works \$25	13%		\$
Brookstone \$25	12%		\$
Build-A Bear Workshop \$25	8%		\$
CVS/pharmacy \$25	6%		\$
Dream Dinners \$75	8%		\$
Fannie May \$10	25%		\$
Harry and David \$25	10%		\$
Jo Ann Fabrics \$20	6%		\$
Sally Beauty \$25	12%		\$
Sephora \$20	4%		\$
Sunglass Hut \$25	12%		\$
Toys R Us/Babies R Us \$20	1.5%		\$
Walgreens \$100	6%		\$
Sporting Goods			
Product	%	Qty	Total
Dick's Sporting Goods \$25	5%		\$
Sports Authority \$25	8%		\$
Product	%	Qty	Total
			\$
			\$
			\$
			\$
			\$

Make Checks Payable To: *Congregation Beth Shalom*

Total Due All Columns: \$

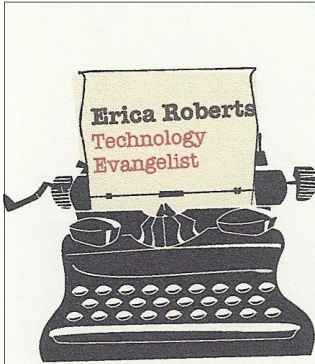


1163 E. Ogden Avenue
Naperville, IL
630-718-9800
www.pocketsonline.com

Order online from Pockets and we'll donate 10% of your order to Congregation Beth Shalom

Use Coupon Code: CBS
Valid for Dine In, Pick Up and Delivery

Offer Expires 12/31/08
not valid with any other offers



Carol Stream, Illinois

630-258-9153

iteachyoucomputers.wikispaces.com
www.iteachyoucomputers.com
erica@iteachyoucomputers.com

Jewish Professionals Lunch n Learn

Discuss an array of Jewish topics over a delicious Kosher lunch while enjoying the opportunity to network with

Second Tuesday of Every Month
11:30-12:30

For More information visit www.JewishNaperville.com
or call Rabbi Mendy Goldstein at 630-778-9770

**SERVING THE
WESTERN
SUBURBS
FOR OVER**



Friends Helping Friends

Susan Ganden, Realtor

Accredited Buyer's Representative, Certified Luxury Home Marketing Specialist, Certified Residential Specialist, Senior Real Estate Specialist

Gwen Strukel, Client Care Manager

Alison Gister, WEB Site Development

Search for all listed homes or find out your home's value: www.TheGandenGroup.com
Call us directly 24 hours – 630-848-1008



Advertise in the CBS Bulletin

MONTHLY AD RATES

- 1/2 Page - \$80/month
- \$72/ month if in advance
- 1/4 page - \$40/month
- \$36/month if in advance
- 1/8 page - \$20/month,
- \$18/month if in advance

Contact Jim Roberts at
cbshalomnewsletter@yahoo.com
(630)260-0240

Congregation Beth Shalom
(Attention Newsletter Editor)
772 West 5th Avenue
Naperville, IL 60563

Please make checks payable to:
Congregation Beth Shalom

Graphic Design rates upon request. Let us make up your

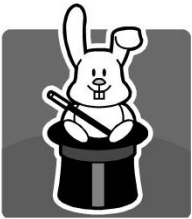
Zoudini's Magic

Let Zak Zoudini put some magic into your next birthday party or family/neighborhood event

Zak does magic for kids of all ages (even grown up kids). His fifteen to twenty minute shows liven up any party. Zak has a full repertoire of magic including:

- ♣ Card tricks
- ♣ Illusions
- ♣ Handkerchief magic
- ♣ And much more

Zak will tailor his show based on the age of his audience. Ask him about special "themed" shows.



"the greatest magician ever to grace the stage" (Zak's grandmother, May, 2006).

Book Zak today and let the magic begin!

Zak Kolar and his family are members of Congregation Beth Shalom. For more information, check out Zak's website: www.zoudinis-magic.com or email Zak at zak@zoudinis-magic.com.

MAZEL TOV
FOR YOUR BAR/BAT MITZVAH, CELEBRATE WITH US AND CELEBRATE IN STYLE
630.505.0900

Hilton
Lisle/Naperville

ALLGAUER'S

WWW.LISLENAPERVILLE.HILTON.COM
3003 Corporate West Drive - Lisle, IL 60532

Naperville Area High School Students!
The Solution to your Math Problems!
Truly Terrific Tutor Wants to Help YOU!!!
Math CAN Make Sense!
You do not have to dread it anymore.

For details about options/rates go to chicago.craigslist.org, click on 'services', search for keyword: **Judi Newman judin00@aol.com** **CALL NOW! 630-357-4544**

*Call **Michele Perry** for discrete personal attention to your fine jewelry needs.*

Custom Designs, Loose Stones, Artistic Resetting, Appraisals and more...

Castello Jewelry Company

474 N. Main Street
Glen Ellyn, Illinois 60137
(630) 790-3272

33 W. Jefferson Street
Naperville, Illinois 60540
(630) 355-1311

The Picture Man, Inc.

Serving the photographic needs of Congregation Beth Shalom since 1982.

Bill Gommel
 Certified Professional Photographer
 630-357-0189
www.thepicturemaninc.com

L'Chaim!
 Bar/Bat Mitzvah Specialist

Bring your Celebration **TO LIFE!**

Trudy Lythberg 630-355-5337

Phone, Email and Address Changes

To assure that our records of you and your family remain accurate please keep us informed of any new changes in your life; a birth*, a move, a new phone number, or a misspelling of an name. We need your help with this important task.

Please give us your update(s) below:

New email address _____

*If there has been a birth in your family please give us the English Name, Hebrew Name and date of birth.

CONGREGATION BETH SHALOM

772 West 5th Avenue Naperville, IL 60563

I (we) enclose my (our) contribution of \$ _____ to the following Synagogue Fund (s):

- | | | |
|--|---|--|
| <input type="checkbox"/> Building Fund | <input type="checkbox"/> Jekabpils Fund | <input type="checkbox"/> Religious Fund |
| <input type="checkbox"/> Building Maintenance Fund | <input type="checkbox"/> Landscaping Fund | <input type="checkbox"/> Religious School Fund |
| <input type="checkbox"/> Chesed Fund | <input type="checkbox"/> Library Fund | <input type="checkbox"/> Scholarship Fund |
| <input type="checkbox"/> Cultural Arts Fund | <input type="checkbox"/> Oneg Supplies Fund | <input type="checkbox"/> Social Action Fund |
| <input type="checkbox"/> Early Childhood Ed Fund | <input type="checkbox"/> Prayer Book Fund | <input type="checkbox"/> Torah Fund |
| <input type="checkbox"/> General Donations Fund | <input type="checkbox"/> Rabbi's Discretionary Fund | <input type="checkbox"/> Other _____ |

In Memory of _____

In Honor of _____ (occasion and name)

Name of Donor _____

Address _____

City, Zip _____ Phone () _____

Please send acknowledgement card to:

Name _____

Address _____

City, Zip _____

BETH SHALOM CEMETERY

Congregation Beth Shalom owns a section in the Naperville Cemetery containing a number of grave sites. Sites are available for at:

Members \$750/site

Non-members \$1,000/site

Copies of the Congregation Cemetery Regulations are available from the Congregation office or Susan Ganden, Chair of the Cemetery Committee. Please contact Susan at **630-848-1008** for information on site selection and purchase.

Yahrzeit Plaques

Our Memorial Alcove is located in the sanctuary.

Memorial (Yahrzeit) Plaques may be dedicated as a lasting memorial to a departed loved one.

The minimum donation for a plaque is 10 Chai (\$180)

Please call the Congregation office to place your order.

TREE OF LIFE

Our Tree of Life is located on the south wall of the sanctuary.

It is available for inscriptions marking the life events of congregation members. The following are the minimum donations for items on the tree:

- Small leaf 10 Chai \$180*
- Medium leaf 20 Chai \$360*
- Large leaf 30 Chai \$540*
- Stone 150 Chai \$2700*

Please call the Congregation office to place your order

There's A Friendly Group Of Jewish
Neighbors Waiting To Welcome You
At Congregation Beth Shalom



NONPROFIT ORG
U.S. POSTAGE

PAID

PERMIT NO. 477
NAPERVILLE, IL
60563